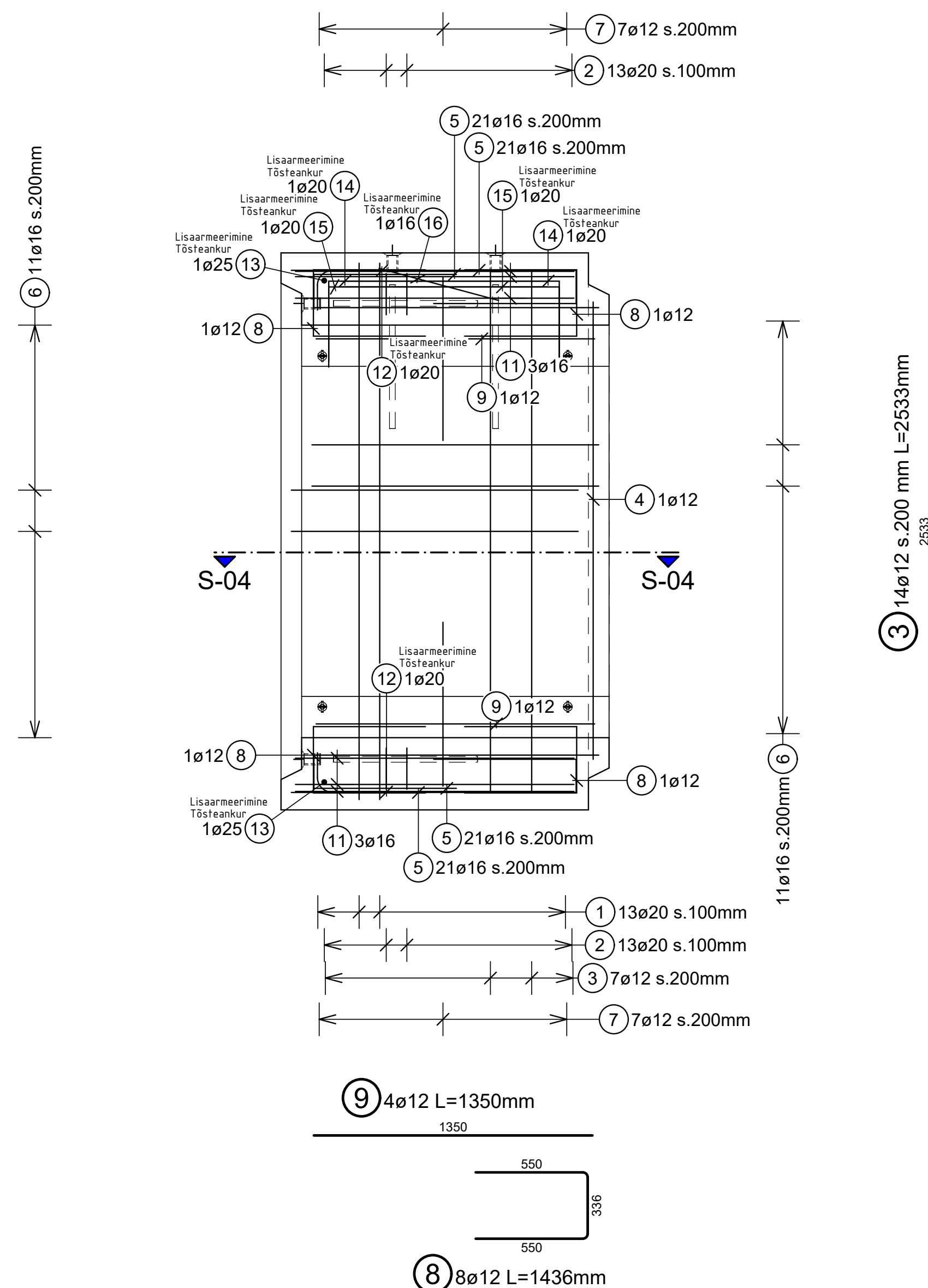


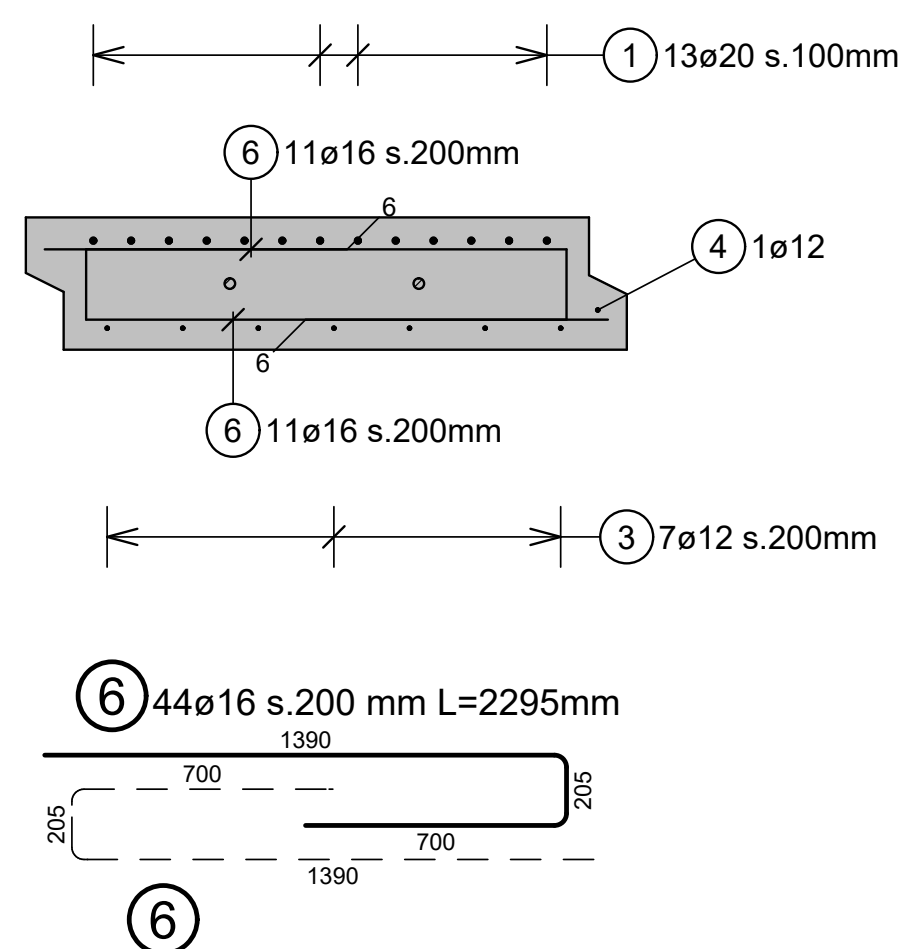
S-02 | LOIGE CUL-0009 / SECTION CUL-0009

MÕÕTKAVA / SCALE 1:20



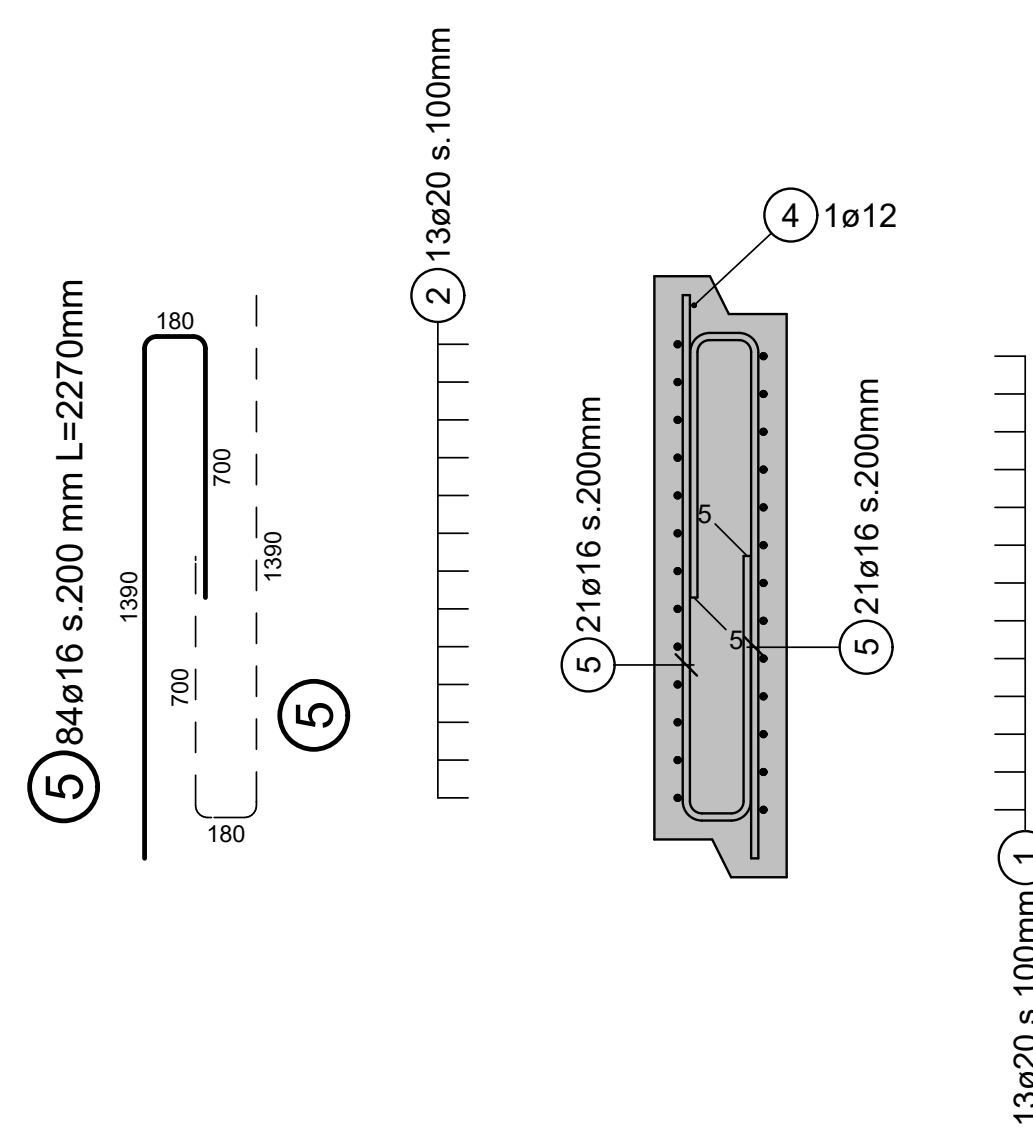
S-04 | LOIGE CUL-0009 / SECTION CUL-0009

MÕÕTKAVA / SCALE 1:20



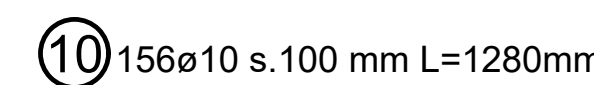
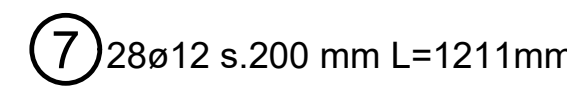
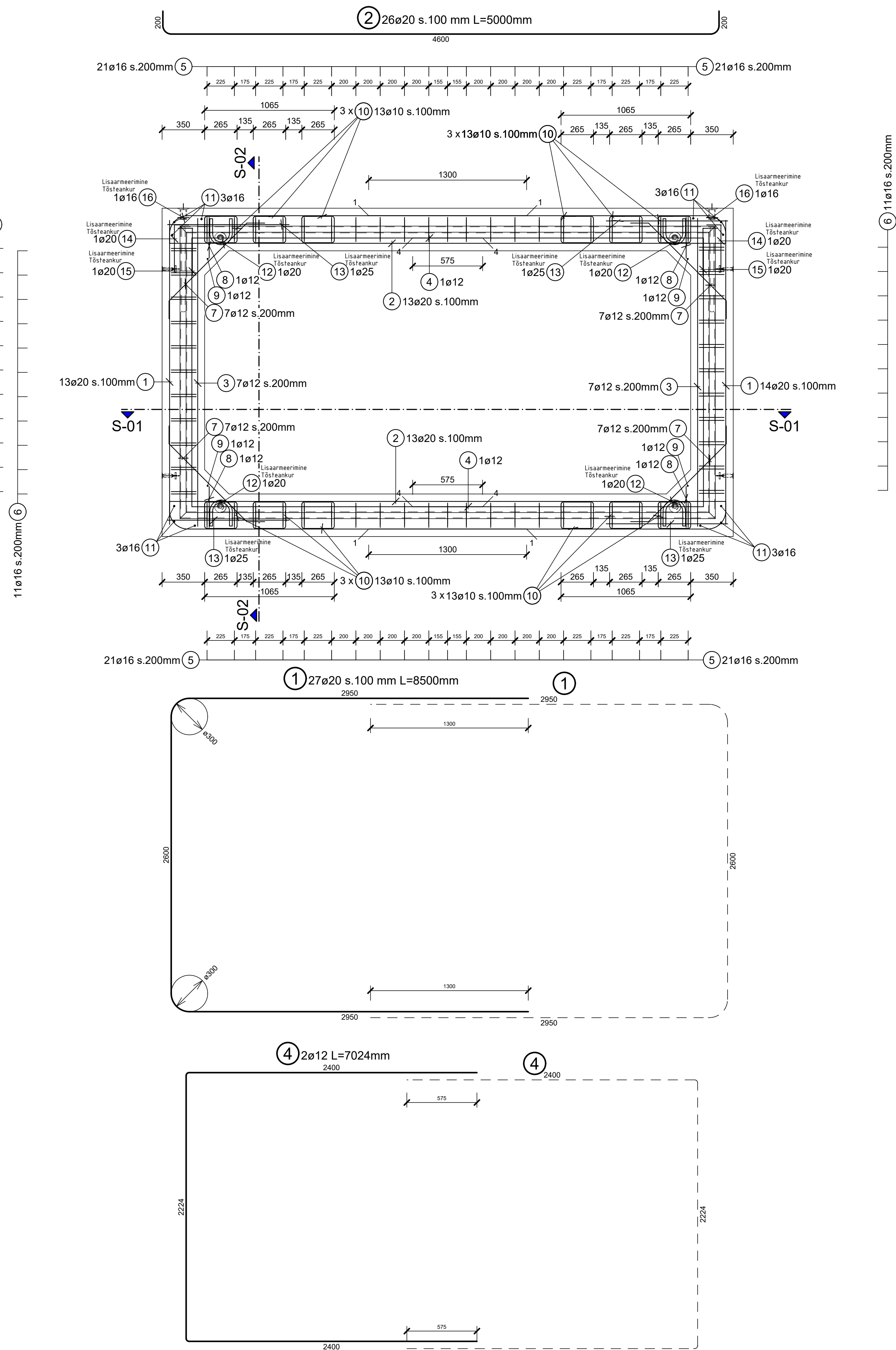
S-03 | LÖIGE CUL-0009 / SECTION CUL-0009

MÕÕTKAVA / SCALE 1:20



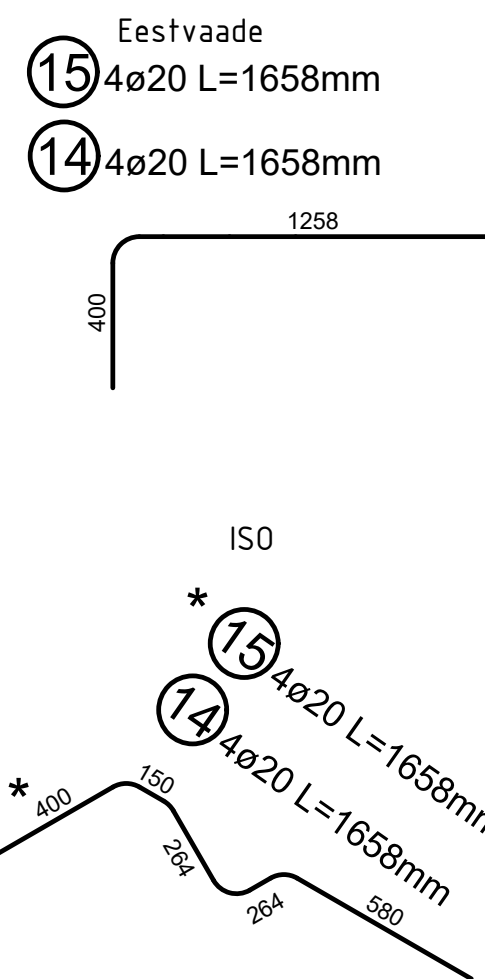
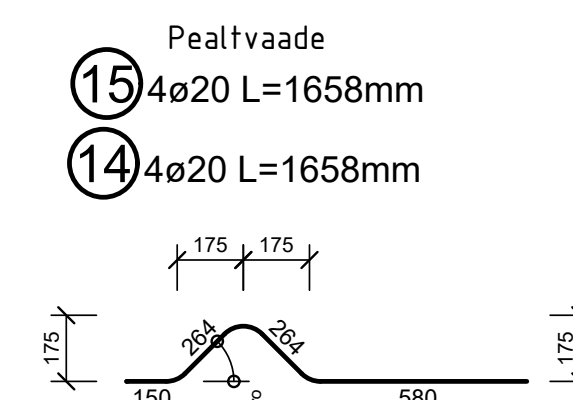
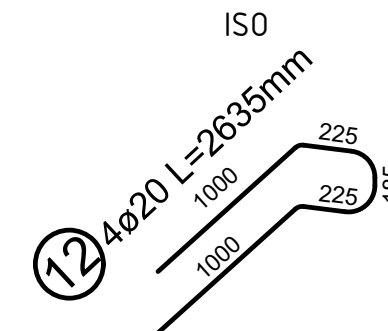
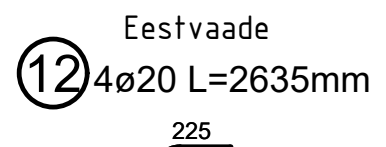
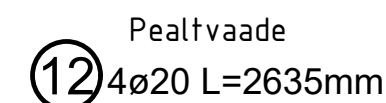
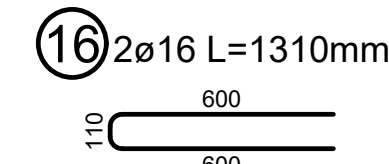
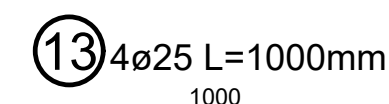
| ARMEERIMINE CUL-0009 (VAADE VORMI) / REINFORCEMENT CUL-0009 (VIEW INTO THE FORMWORK)

MÕÕTKAVA / SCALE 1:20

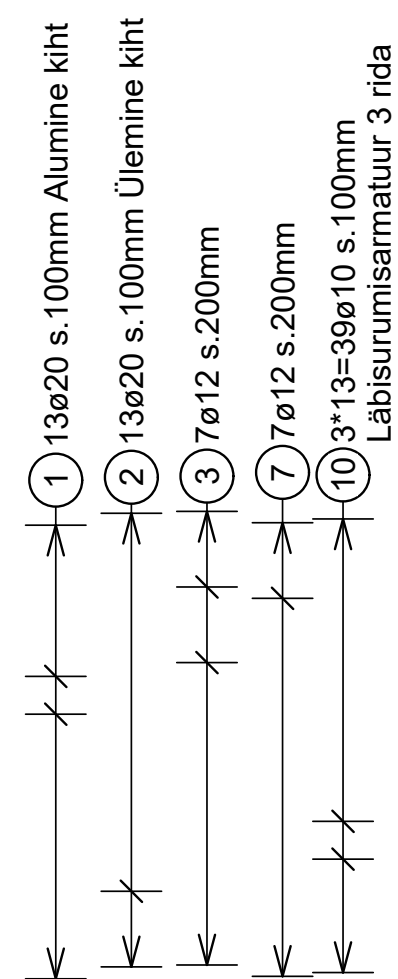


Lisaarmeerimine / Additional reinforcement

Tõsteankrud / Lifting anchors

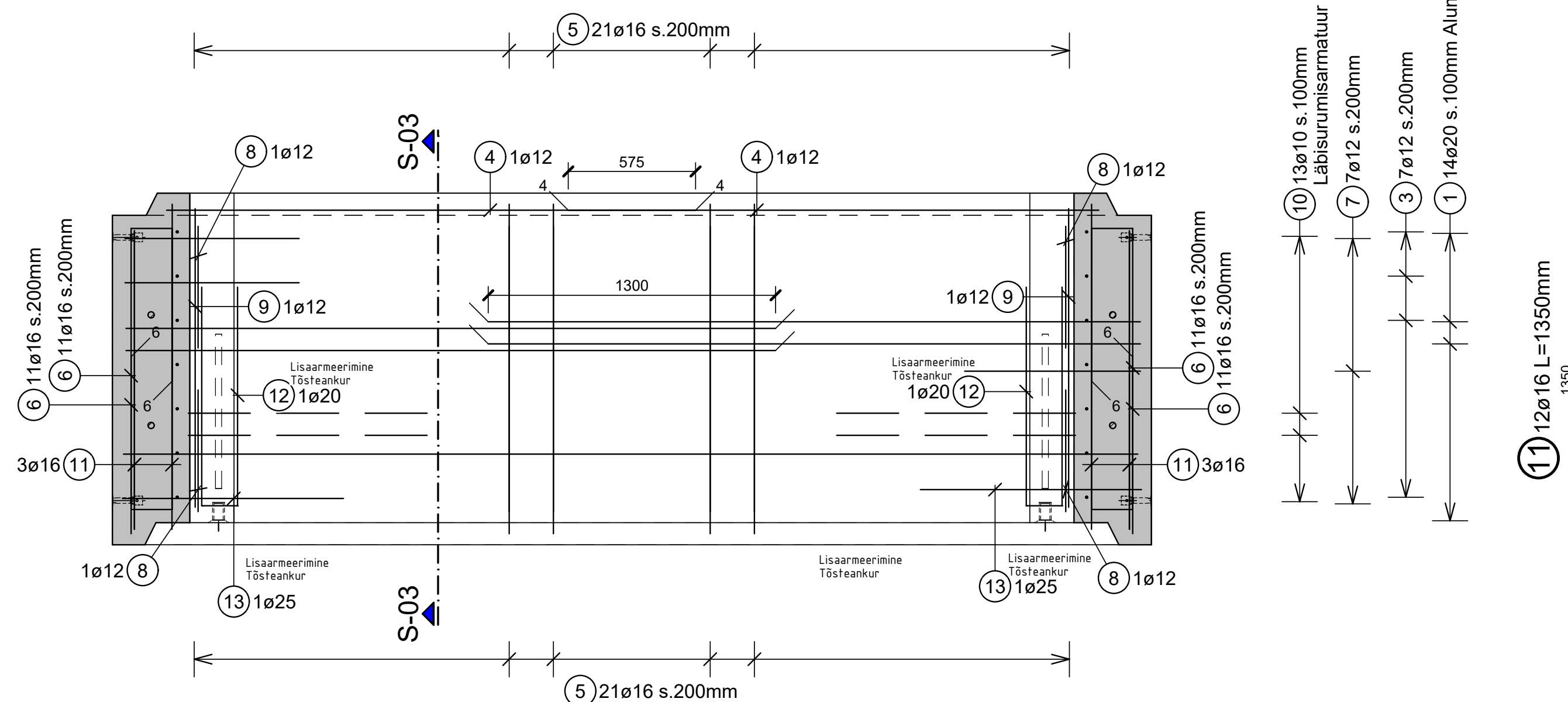


* Põhne teisele poole



S-01 | LOIGE CUL-0009 / SECTION CUL-0009

MÕÕTKAVA / SCALE 1:20



Poz. Nr.	Cugul e	Pădur e [m]	Distanț a [m] B5009					Măsurăto r
			a 10	a 16	a 20	a 25		
1	27	20	8,50		229,50			
2	26	20	5,00		130,00			
3	14	12	2,53	35,42				
4	2	12	7,02	14,04				
5	84	16	2,27		190,68			
6	44	16	2,30		101,20			
7	28	12	1,21	33,88				
8	8	12	1,44	11,52				
9	4	12	1,35	5,40				
10	156	10	1,28	199,68				
11	12	16	1,35		16,20			
12	4	20	2,64			10,56		
13	4	25	1,00				4,00	
14	4	20	1,66			6,64		
15	4	20	1,66			6,64		
16	2	16	1,31		2,62			
Căutură pe la coșta (m)			199,68	100,26	310,70	383,34	4,00	
kg / m			0,617	0,888	1,580	2,470	3,850	
Kcal a coșta			123,2	89,0	490,9	846,9	15,4	

Pos. Nr.	Kogusid	a	Pikkus [m]	Pikkus jn	Idr/ds	Vanda kuju ja painutus	Märksused 8500B
1	2*27 +54	20	8.50	450.00	15		
2	2*26 +52	20	5.00	260.00	7		
3	2*14 +28	12	2.53	70.84			
4	2*2 +4	12	7.02	28.08			
5	2*84 +168	16	2.27	381.36	4		
6	2*14 +28	16	2.30	202.40	4		
7	2*28 +56	12	1.21	67.76	4		
8	2*8 +16	12	1.44	23.04	4		
9	2*4 +8	12	1.35	10.80			
10	2*156 +312	10	1.28	399.36	4		
11	2*12 +24	16	1.35	32.40			
12	2*4 +8	20	2.64	211.12	7		30-Vaade
13	2*4 +8	25	1.00	8.00			
14	2*4 +8	20	1.66	13.28	7		30-Vaade
15	2*4 +8	20	1.66	13.28	7		30-Vaade
16	2*2 +4	16	1.31	5.24	4		

Element: CUL-0009			Kogus, tk		
Maht: 7.105 m ³		Kaal: 18.36 t	2x		
Betooni luuvestiklass:	C35/45	Nimikaitsekiht c, [mm]			Lubatud hald
		kg/m ²	üleväl	alpool	d _{90%} [mm]
		50 mm	50 mm	50 mm	10 mm
Armatuurivastik klass:	B500B	Keskkonnaklass:		XC4, XD1, XF3	
Armatuuri kaal kokku:	1665.4 kg				

[illegible]